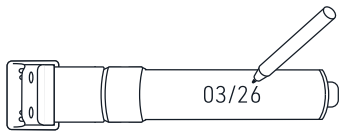


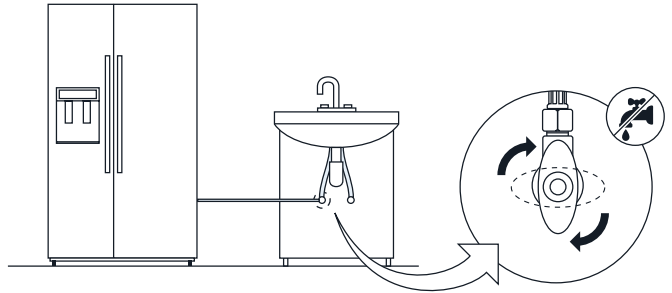
Installation Guide For Inline Quick Connect JG (John Guest) models

WD-G4-JG | WD-HMG4-JG | WD-20m-JG | WD-D-20m-G4-JG | WD-D-FRM-G4-JG

1

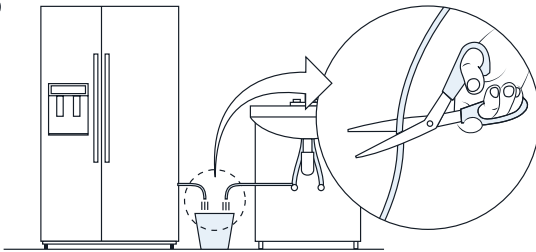


Write the installation date on the cartridge for future reference.

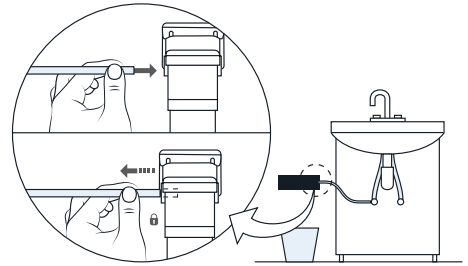


Turn off the water supply valve. The valve is usually located under the sink, but not always.

2

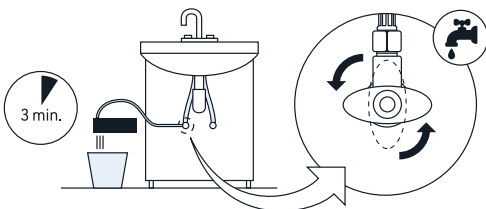


Place a bucket beneath the water supply line and cut the plastic or copper 1/4" (or PEX 1/8") water supply line.

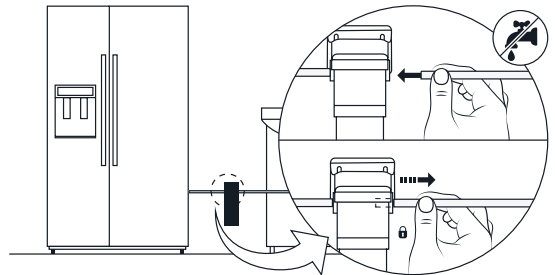


Push the tubing from the water supply line firmly into the inlet side of the filter, then pull back gently to secure it. The inlet side is located on the left.

3

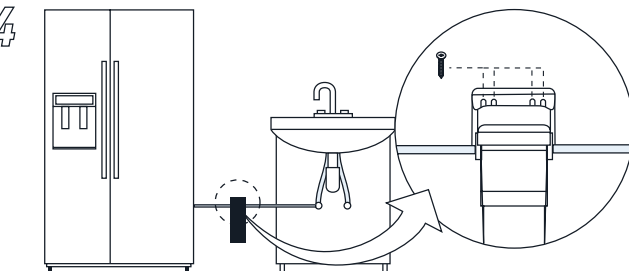


Activate the filter by slowly turning on the water supply and directing the outlet of the filter toward the bucket. Allow water to flow for 3 minutes.

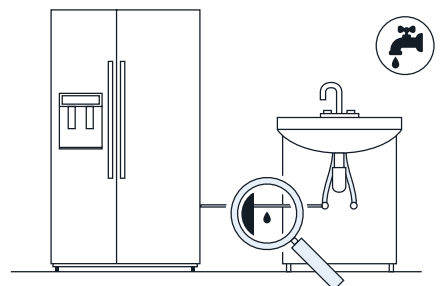


Turn off the water supply again, then push the outlet water line firmly into the outlet port of the filter and pull back gently to secure it.

4



Secure the mounting bracket in a convenient location.



Turn on the water supply and check for leaks.