

It's your Water[®]

USER GUIDE

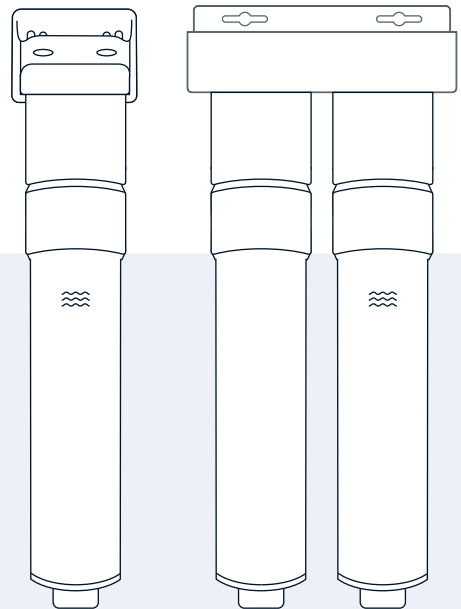
Woder TC (Twist-Connect)
Water Filtration Systems





INSTALLATION GUIDE

For SINGLE-STAGE & DUAL-STAGE Water Filtration Systems



UNDERSINK DIRECT CONNECT (DC) MODELS:

WD-G4-DC | WD-HMG4-DC | WD-20m-DC
WD-D-20m-G4-DC | WD-D-FRM-G4-DC

INLINE QUICK CONNECT (JG) MODELS:

WD-G4-JG | WD-HMG4-JG | WD-20m-JG
WD-D-20m-G4-JG | WD-D-FRM-G4-JG

Minimum Working Pressure: 40 psi. Maximum Working Pressure: 70 psi. Flow rate: 0.5 GPM @60psig. Maximum Operating Temperature: 100°F. Minimum Operating Temperature: 35°F. Capacity: WD-GEN4-2512TC tested for 1700 gallons. Warranty: 1-year replacement guarantee. Ingredients: Formula Clearbrook GEN4. Systems are tested and certified under industry standards. Water Source: This water filter unit is to be used in conjunction with municipally treated water. Safety Warning: Do not use water that is microbiologically unsafe or unknown quality without adequate disinfection before or after the system. Compliance: The system and installation shall comply with applicable state and local regulations. Chlorine Reduction: The Chlorine influent concentration shall be specified as 2 mg/l. The reduction requirement is equal or greater than 50%.

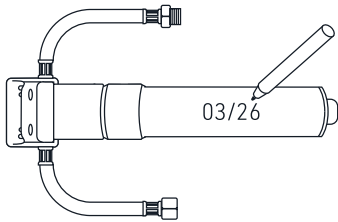
woder
the water company™

FOR INSTALLATION QUESTIONS OR CUSTOMER SUPPORT,
PLEASE CONTACT US AT WWW.WODER.COM/SUPPORT

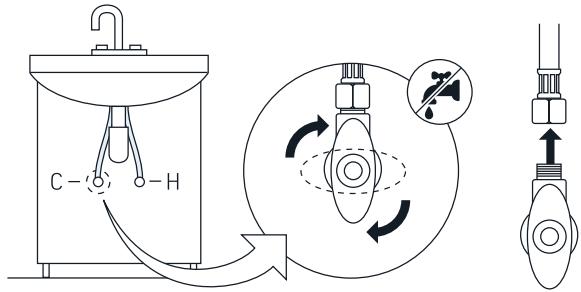
Installation Guide For Undersink Direct Connect (DC) models

WD-G4-DC | WD-HMG4-DC | WD-20m-DC | WD-D-20m-G4-DC | WD-D-FRM-G4-DC

1

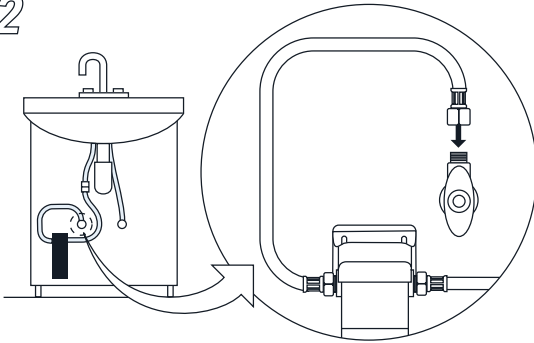


Write the installation date on the cartridge for future reference.

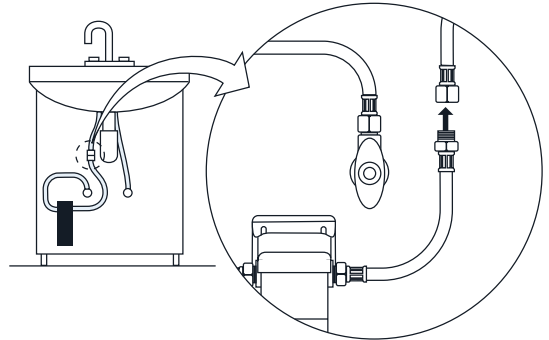


Turn off the water supply valve, then disconnect the 3/8" female compression end of the supply line attached to the faucet.

2

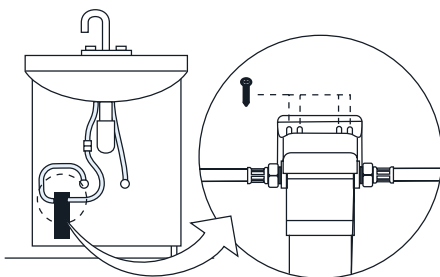


Connect the 3/8" female compression end of the inlet hose to the water supply valve. The inlet is located on the left side of the mounting head.

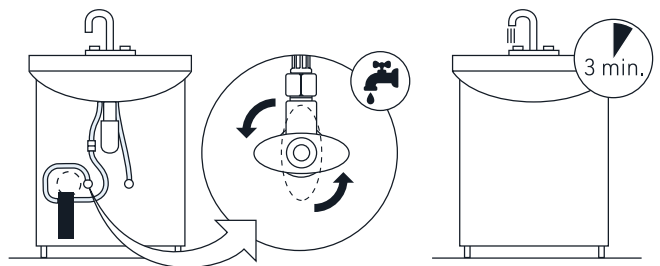


Connect the 3/8" male compression end of the outlet hose to the supply line attached to the faucet.

3



Secure the mounting head in a convenient location.

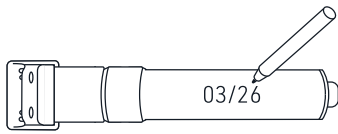


Turn on the cold-water supply. Activate the filter by allowing water to flow for 3 minutes.

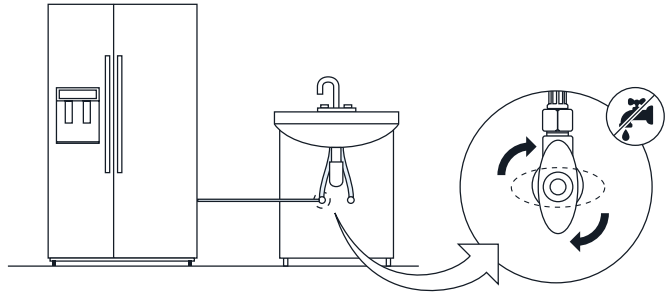
Installation Guide For Inline Quick Connect JG (John Guest) models

WD-G4-JG | WD-HMG4-JG | WD-20m-JG | WD-D-20m-G4-JG | WD-D-FRM-G4-JG

1

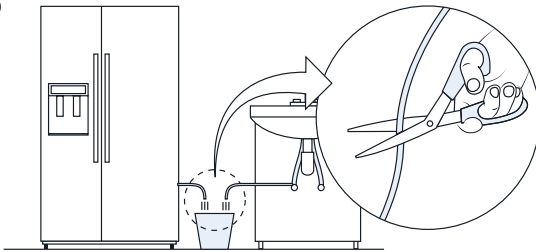


Write the installation date on the cartridge for future reference.

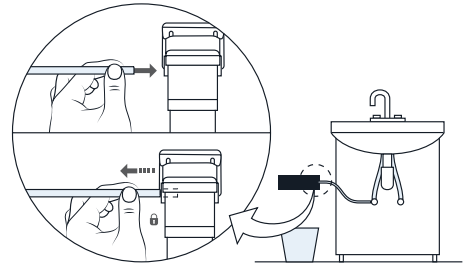


Turn off the water supply valve. The valve is usually located under the sink, but not always.

2

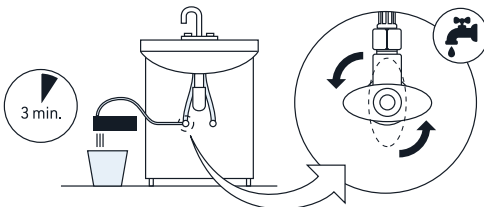


Place a bucket beneath the water supply line and cut the plastic or copper 1/4" (or PEX 1/8") water supply line.

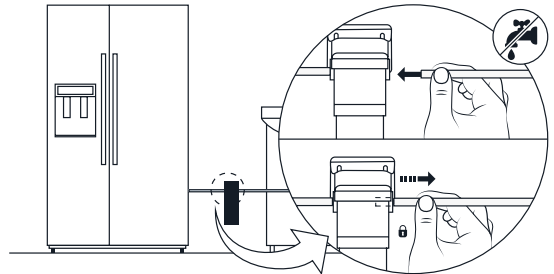


Push the tubing from the water supply line firmly into the inlet side of the filter, then pull back gently to secure it. The inlet side is located on the left.

3

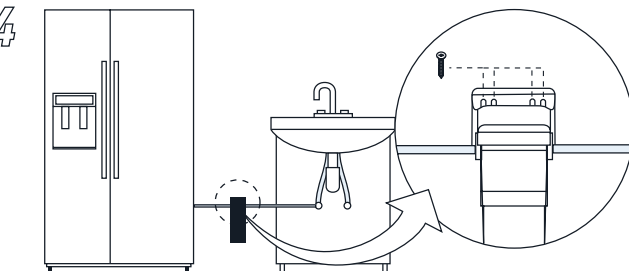


Activate the filter by slowly turning on the water supply and directing the outlet of the filter toward the bucket. Allow water to flow for 3 minutes.

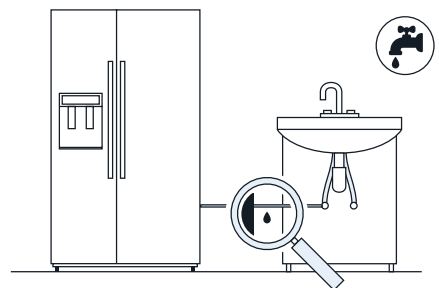


Turn off the water supply again, then push the outlet water line firmly into the outlet port of the filter and pull back gently to secure it.

4



Secure the mounting bracket in a convenient location.



Turn on the water supply and check for leaks.

MAINTENANCE AND WARRANTY

A FILTER'S ACTUAL LIFESPAN MAY VARY DEPENDING ON LOCAL WATER CONDITIONS, USAGE PATTERNS, NEARBY CONSTRUCTION ACTIVITY, OR DAMAGED MUNICIPAL PIPELINES.

All Woder cartridges are covered by a 1-year warranty. This period represents the cartridge's rated lifespan and filtration capacity.

When used with municipally treated water, the Woder filter should maintain consistent flow and contaminant removal performance throughout its 1-year rated capacity.

FOR OPTIMIZED CAPACITY:

- 1 Use municipally treated **cold water only**.
- 2 Do not run hot, salty, or softened water through the system, as this may cause premature clogging of the outlet screens.
- 3 Do not run dirty or untreated well water, as this may cause premature clogging of the inlet screens.
- 4 If your municipal water is known to be hard or contains high levels of sediment, use an entry-level (whole-house) pre-sedimentation system upstream of your point-of-use Advanced (G4) filtration.
An alternative solution is the WD-20m-G4 Dual-Stage System:
 - a. Stage 1: 20-micron pre-sedimentation
 - b. Stage 2: Advanced G4 filtration
- 5 **Mounting Head Replacement:** We recommend replacing the mounting head every 3-4 years to ensure optimal system performance.

The cartridge has reached the end of its capacity when water flow decreases significantly or when the taste of chlorine or unpleasant odors become noticeable again.

WODER® GEN4 (G4) ADVANCED FILTRATION.

Enjoy tap water as pure and healthy as spring water.

Woder WD-G4-REP cartridge is certified by WQA to NSF/ANSI 42 for Chlorine, taste, odor and NSF/ANSI 372 for lead free compliance as verified and substantiated by test data.



SELECTIVE FILTRATION™ IS OUR ADVANTAGE.

Developed in the USA, our Advanced filtration is a cutting-edge technology. It removes Lead, Chlorine, Heavy Metals, PFAS and 99.9% of contaminants present in municipally treated water, while maintaining essential minerals like calcium, potassium and magnesium.

3RD PARTY TEST RESULTS

HEAVY METALS

Contaminant	Challenge Water (µg/L)	Filtered Water (µg/L)	% Removal
Aluminum	202	<1	>99.50%
Arsenic	50.6	2.9	94.27%
Barium	929	1.5	99.84%
Beryllium	50.1	<1	>98.00%
Cadmium	30.4	<1	96.71%
Chromium (hexavalent)	302	<1	>99.67%
Copper	3,025	1.1	99.96%
Iron	3,030	88.4	97.08%
Lead	151	<1	>99.34%
Manganese	1,002	<1	>99.90%
Mercury (inorganic)	6.1	<0.5	>91.80%
Nickel	104	<1.5	>98.56%
Zinc	102	<5	>99.02%

PFAS / PERFLUORINATED CHEMICALS

Contaminant	Challenge Water (µg/L)	Filtered Water (µg/L)	% Removal
8:2 Fluorotelomer sulfonate (8:2FTS)	1.04	<0.002	>99.81%
Perfluorobutane sulfonate (PFBS)	1.04	<0.002	>99.81%
Perfluorodecanoic acid (PFDA)	0.52	<0.002	>99.62%
Perfluorohexane Sulfonate (PFHXS)	1.04	<0.002	>99.81%
Perfluorohexanoic acid (PFHxA)	0.52	<0.002	>99.62%
Perfluorononanoic acid (PFNA)	0.52	<0.002	>99.62%
Perfluorooctane sulfonate (PFOS)	1.04	<0.002	>99.81%
Perfluorooctanoic acid (PFOA)	0.52	<0.002	>99.62%
Polytetrafluoroethylene	1.04	<0.002	>99.81%

CHEMICAL DISINFECTANTS

Contaminant	Challenge Water	Filtered Water	% Removal
Chloramine	2.98 mg/L	<0.14 mg/L	>95.30%
Chlorine	2.12 mg/L	<0.03 mg/L	>98.58%

VOLATILE ORGANIC COMPOUNDS (VOCS)

Contaminant	Challenge Water (µg/L)	Filtered Water (µg/L)	% Removal
1,1-Dichloroethane	92.8	<0.1	>99.89%
1,1-Dichloroethene	77.8	<0.1	>99.89%
1,1,1-Trichloroethane	84.8	<0.1	>99.88%
1,1,2-Trichloroethane	110.2	<0.1	>99.91%
1,2,4-Trichlorobenzene	48.4	<0.1	>99.79%
Benzene	80	<0.1	>99.88%
Bromodichloromethane	84	<0.1	>99.88%
Carbon Tetrachloride	88	<0.1	>99.89%
Chloroform	85.7	1.39	98.38%
Cis-1,2-Dichloroethene	181	<0.1	>99.94%
Dibromochloromethane	80.5	<0.1	>99.88%
Dichloromethane (methylene chloride)	18.2	<0.1	>99.45%
Ethylbenzene	88.2	<0.1	>99.89%
Styrene	150	<0.1	>99.93%
Tetrachloroethylene	85.6	<0.1	>99.88%
Toluene	78.3	<0.1	>99.87%
Trichloroethylene	180	<0.1	>99.94%
Vinyl chloride	43.4	<0.1	>99.77%
Xylenes (total)	40.2	<0.1	>99.75%

Also tested and remove Herbicides, Pharmaceutical Drugs, Phthalates and Radiological Elements.

ADDITIONAL WODER MODELS

Safe, long-lasting, modular, and affordable point-of-use water filtration systems for your home and office.



ADVANCED COMBO

(WD-HMG4-REP)

Water supplies with elevated levels of heavy metals require specialized filtration.

Our ADVANCED Combo filter combines our Advanced filtration formula with additional heavy metal removal media, making it ideal for areas with high heavy metal (HM) contaminant levels.



HEAVY METALS AND ADVANCED REMOVAL

(WD-HMG4-REP + WD-G4-REP)

Heavy metals are present in all water supplies.

Our Heavy Metal (HM) Removal Cartridge is specifically formulated for communities and households where water testing has confirmed heavy metal concentrations exceeding the EPA's Maximum Contaminant Levels (MCLs).



PRE-SEDIMENTATION AND ADVANCED REMOVAL

(WD-20M-REP + WD-G4-REP)

For households with hard water that do not have an entry-point (whole-house) pre-sedimentation system, high sediment levels can act as carriers for absorbed chemicals and contaminants.

Our Sediment Removal Cartridge (Stage 1) is engineered to capture these particulates while **protecting the Advanced Filtration Cartridge (Stage 2)** from premature clogging.



FLUORIDE AND ADVANCED REMOVAL

(WD-FRM-REP + WD-G4-REP)

Municipally treated water supplies with elevated fluoride levels have been shown to potentially contribute to adverse health effects.

Our dual-stage FRM system is engineered to remove up to 95% of fluoride contaminants.

WATER QUALITY

Different municipal water supplies contain varying levels and types of contaminants. That's why we developed our single-stage and dual-stage water filtration systems. No matter what's in your water, Woder's modular Twist Connect (TC) water filtration systems are tailored to your specific filtration needs.

CERTIFIED HOME LOAN WATER TEST

Turnaround 5 Days in lab
Analytes 6

PFAS WATER TEST

Turnaround 10 Days in lab
Analytes 14

DRINKING WATER TEST: LEVEL 1

Turnaround 5 Days in lab
Analytes 47

DRINKING WATER TEST: LEVEL 2

Turnaround 5 Days in lab
Analytes 109

HEXAVALENT CHROMIUM WATER TEST

Turnaround 10 Days in lab
Analytes 1

VOC WATER TEST

Turnaround 5 Days in lab
Analytes 60

IT'S YOUR WATER®!

To better understand what's in your environment or in your home's water supply, laboratory testing is recommended.

Woder's lab testing kits provide detailed, easy-to-understand results from leading laboratories.

All sampling materials. Prepaid shipping both ways.
Easy-to-follow instructions. Reliable analytical results.

5-star customer support.

[GO TO WODER.COM/LAB-TESTING](https://www.woder.com/lab-testing)



woder[®]
the water company[™]

MORE ABOUT US. Get to know Woder and our mission: woder.com/about
SUPPORT. Need assistance with an order / have a question? [Woder.com/support](https://woder.com/support)
WHOLESALE INQUIRIES. For inquiries, please contact Idan: idan@woder.com

WODER
Nehara LLC. 8 The Green, Suite
15943 Dover, DE 19901

[Woder.com](https://woder.com)